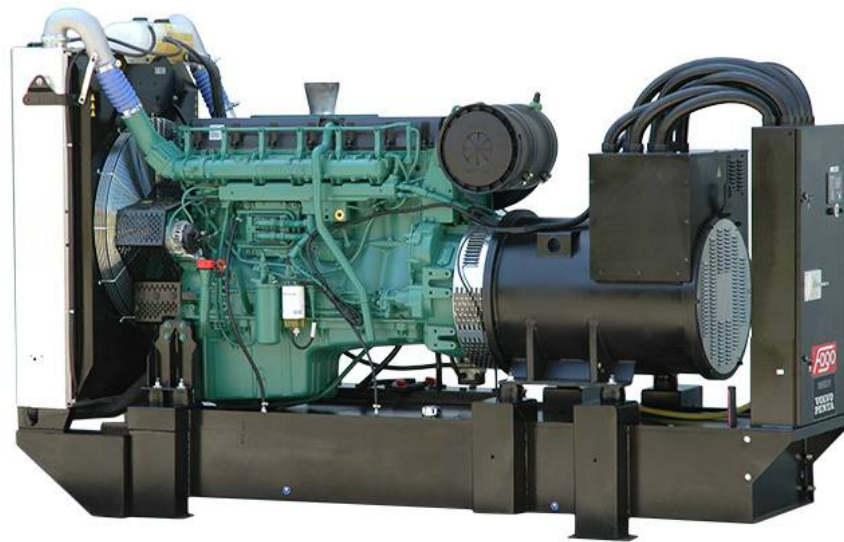


**MAIN FEATURES**

Highest quality and reliability. ComAp IL-NT AMF25 controller. Ready to control MAINS – GENERATOR transfer switch. Configured for both manual and automatic mode (MRS + AMF).	Wide range of standard and optional equipment. Engine heater – ready to load just after start. Frame anticorrosion coating – Zr. Brushless alternator.
Wide range of remote communications options. Schneider NS type GCB.	



The presented image is for illustration purpose only.

**GENERAL DATA**

Code	F.0660.VA.F	<b>Nominal power P.R.P.:</b> Prime power available in variable load application in accordance with ISO 8528, 10% overload capacity is available for a period of 1h within a 12-hour period of operation. Average power consumption should not exceed 70% PRP for each 24 hours of work.
Standby power E.S.P. [kVA] / [kW]	699,0 / 560,0	<b>Stand-by power E.S.P.:</b> Emergency standby power rating is applicable for supplying emergency power for the duration of a utility power interruption. No overload allowed, limited to 500h of operation per year, average power consumption should not exceed 80% ESP for each 24 hour
Prime power P.R.P. [kVA] / [kW]	636,0 / 509,0	
Prime current P.R.P [A]	918,0	<b>Remark:</b> All parameters are given for reference conditions: ambient air temperature up to 40°C and site altitude above sea level 1000m.
Frequency [Hz]	50	
Voltage [V]	400	
Exhaust emission	stage II	
Fuel type	Diesel (EN 590)	
Fuel consumption - 50% load [l/h]	66,5	<b>Norms and directives:</b> <ul style="list-style-type: none"> <li>• Machinery directive 2006/42/EC</li> <li>• Low voltage directive 2014/35/EC</li> <li>• EC directive 2014/30/EC</li> <li>• Emission directive 97/68/EC</li> <li>• ISO 8528-1:2005, ISO 8528-5:2013</li> <li>• ISO 8528-13:2016</li> <li>• EN 60204-1</li> </ul>
- 75% load [l/h]	97,8	
- 100% load [l/h]	131,0	
- 110% load [l/h]	144,4	
Standard fuel tank capacity [l]	700	
Autonomy with 100% load [h]	5,3	
Engine control voltage [V]	24	
Weight without fuel [kg]	~3920	
Dimensions L x W x H [mm]	3590 x 1358 x 2218	
Acoustic power Lwa [dBA]	117,4 ± 2,9	
Acoustic pressure Lpa (7m) [dBA]	87,8 ± 2,8	

**STANDARD CONTROLLER**

Controller type: AMF 25

Easy to operate, intuitive graphical interface

Real time clock with battery supply

AMF function available

Flexible event based history with up to 119 events

3 Phase generator current measurement

Generator and Mains phase voltage measurement

Active/reactive power measurement

Active and reactive energy counter

Running hours counter

Battery charging alternator circuit connection

Fuel level measurement

Generator protection (over/under frequency, voltage, overcurrent)

Communication with ECU supporting CAN J1939 standard

Communication interface RS 485 and RS 232 supporting Modbus RTU (IL-NT RS232-485 module required)

GSM modem / wireless internet (IL-NT GPRS module required)

Internet/Ethernet communication (IB-Lite module required)

InteliMonitor software for single gen-set view

WebSupervisor software for Android mobile devices or PC's for fleet management

Active SMS or e-mail (IL-NT GPRS or IB-Lite module required)


**ENGINE**

Brand	Volvo
Type	TWD1643GE
Made in	Sweden
Engine power [kW]	536,0
Emission standard*	stage II
Rotation per minute [rpm]	1500
Engine governor	electronic
Governor class**	G3
Displacement [l]	16,1
No of cylinder	6
Fuel system	unit injectors
Electrical system [V]	24
Cooling system capacity [l]	95,0
Oil pan capacity [l]	48,0
Fuel type	Diesel (EN 590)

\* According directive 97/68/EC non road mobile machinery engine emission.

\*\* According ISO 8528-5:2013

**ALTERNATOR**

Nominal Voltage [V]	400
Nominal power factor (cos phi)	0,8
Ambient temperature, altitude	40 °C, 1000m a.m.s.l
Nominal Power [kVA]	660,0
IP protection	IP 23
No of bearing	single bearing
Coupling	direct
Technology	brushless
Short circuit maintaining capacity	270% 10s
Efficiency [%]	94,9
Insulation class	H
Total harmonic content THD [%]	1,5
Reactance Xd'' [%]	12,5
Voltage regulator type	DVR, digital
Voltage measurement	3 phases
Voltage accuracy [%]	+/- 0,25
AVR supply system	auxiliary winding
AVR supply optional	PMG
Made in	EU

**FOCUSSED ON GENERATORS ONLY****Power Generator FDF 660 V****STANDARD EQUIPMENT****OPTIONAL EQUIPMENT**

Volvo TWD1643GE engine	✓	Battery disconnection switch	✓
Electronic engine speed governor	✓	GCB 4P Schneider NSX Micrologic 2.0	✓
Oil low pressure switch	✓	Power Lock type power output	✓
Oil pressure sensor	✓	Power socket box	✓
Engine high temperature switch	✓	Transfer switch controlled by generator controller	✓
Engine high temperature sensor	✓	Transfer switch with ATS controller	✓
Engine preheating with thermostat	✓	GPRS communication card	✓
Engine oil Titan Cargo 15W40	✓	Ethernet card	✓
Oil draining hand pump	✓	RS 485, RS 232 card	✓
Fuel filter with water separator	✓	Remote display	✓
Coolant Fuchs Maintain Fricofin LL-35	✓	Non-standard fuel tank size	✓
Starting batteries 2x 180 Ah	✓	External fuel tank 1 000 – 10 000 l	✓
Battery charger	✓	3-way valve for external fuel tank connection	✓
GCB Schneider NS1000 3P +Mic 2.0	✓	Fuel tank filling pump and shut-off valve	✓
GCB shunt release coil	✓		
Bar connection	✓		
Controller ComAp IL-NT-AMF25	✓		
Controller switch	✓		
Acoustic alarm	✓		
Emergency stop button	✓		
Welded frame with fuel tank	✓		
Frame with drip tray	✓		
Fuel level measurement	✓		
Exhaust compensator	✓		
Engine and alternator vibro isolators	✓		
Silencer delivered with the generator	✓		
Transportation brackets	✓		

**INSTALLATION GUIDELINES**

Power terminal	Busbar
Recommended cable for up to 30m power cable way	Flexible 3x5x150 mm <sup>2</sup>
Recommended cable for do 30m generator heater supply	Flexible 3x2,5 mm <sup>2</sup>

\*For additional cable connection with FOGO ATS see ATS wiring diagram

Exhaust pipe min diameter (max. 7 m, 4 bends)	159 mm
Exhaust pipe min diameter (max. 15 m, 4 bends)	159 mm

**MAINTENANCE GUIDELINES**

Fuel filters replacement	500 h / 1 year
Oil replacement	After first 100h, then every 500 h / 1 year
Oil filters replacement	After first 100h, then every 500 h / 1 year
Coolant replacement	1000 h / 2 years
Battery replacement	2 years
Electrical installation supervising	According to local requirements, at least once per year

**WARRANTY**

Continuous work generators	12 months up to 1000 working hours
----------------------------	------------------------------------